

## Component Replacement - electrical -



*Xperia™ X Compact*  
**F5321**

## CONTENTS

1	Replaceable Components .....	3
2	Tool .....	5
3	Component Placing.....	6
4	Additional Repair Info .....	8
5	Revision History .....	16

***For general information about electrical repair related issues, refer to 1220-1336: Generic Repair Manual - electrical***

***Baking prior to repair is required, if the board have been exposed to air more than 12 hours from PWB package opening. Too long exposure time increase the level of moisture in PWB and the PWB could delaminate during repair process and result in direct or latent failures and reduce reliability.  
The boards shall be baked in 125°C ±5°C for 4 hours.***

***Test after electrical replacement: refer to 1273-1772 Mechanical Test Instruction***

***All Electrical components are RLC level C, Reversed Logistic Classification, See the Spare Part Handling chapter in Mechanical/Generic Repair Manual 1220-1333.***

***Do not remove shield can lids (Heat pasta are added and RF performance will be damaged)***

***If there is other components right next to replacement componet, protect the other components with Kapton tape.***

## 1 Replaceable Components

**EXPLANATION OF ABBREVIATIONS USED IN THE COLUMN 'COMMENTS' BELOW**

***REPAIR METHOD***

**HA** = Hot Air (removal & mounting)

**ST** = Soldering Tool (removal & mounting)

**HA/ST** = Hot Air for removal - Soldering Tool for mounting

**BGA** = BGA Station

**BH** = Bottom Heater

***ADDITIONAL INFORMATION***

⇒1 (2, 3, 4, etc.) = Proceed to 'Additional Repair Info' for further instructions in the indicated section(s).

## Primary Side

Position	Component	Part no.	Comments
CN4000	Card Conn SIM 3in2 Connector	1299-2861	HA+BH or BGA → 1
CN4808	Conn Leaf Spring Plug 1p WH : 0.8+-0.2	1294-8905	HA+BH → 2
CN4863	Conn Pogopin Plug 1p	1301-2824	HA+BH → 3
CN4864	Conn Pogopin Plug 1p	1301-2824	HA+BH → 4
CN4865	Conn Pogopin Plug 1p	1301-2824	HA+BH → 5
CN4866	Conn Pogopin Plug 1p	1301-2824	HA+BH → 6
CN4867	Conn Pogopin Plug 1p	1301-2824	HA+BH → 5
CN4868	Conn Pogopin Plug 1p	1301-2824	HA+BH → 5
CN4870	Conn Pogopin Plug 1p	1301-2824	HA+BH → 9
CN4871	Conn Pogopin Plug 1p	1301-2824	HA+BH → 10
CN4873	Conn Pogopin Plug 1p	1301-2824	HA+BH → 11

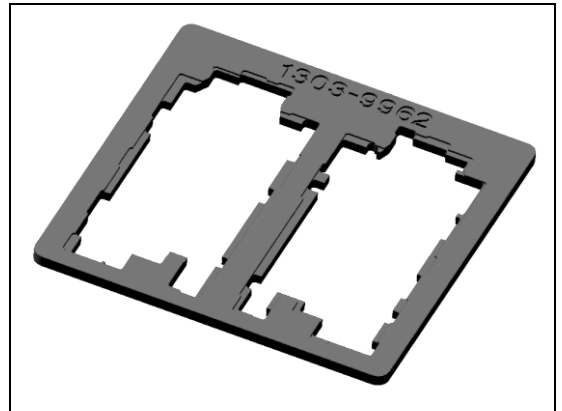
## Secondary Side

Position	Component	Part no.	Comments
CN1300	Conn BtB Plug 4p HIROSE/BM22	1281-9973	HA+BH → 1
CN4405	Conn Coax Receptacle 1p	1287-3442	HA+BH → 2
CN4412	Conn Coax Receptacle 1p	1287-3442	HA+BH → 3
CN4414	Conn Coax Receptacle 1p	1287-3442	HA+BH → 4
CN4422	Conn Coax Receptacle 1p	1287-3442	HA+BH → 5
CN8003	Conn Coax Receptacle 1p	1287-3442	HA+BH → 6
CN3503	Conn Leaf Spring 1p WH : 1.0+-0.2	1304-1858	HA+BH → 7
CN3504	Conn Leaf Spring 1p WH : 1.0+-0.2	1304-1858	HA+BH → 7
CN4807	Conn Leaf Spring Plug 1p Mid mount Type	1275-0410	HA+BH → 8
CN4859	Conn Leaf Spring Plug 1p Mid mount Type	1275-0410	HA+BH → 9
CN8000	Conn Leaf Spring Plug 1p Mid mount Type	1275-0410	HA+BH → 10
CN8001	Conn Leaf Spring Plug 1p Mid mount Type	1275-0410	HA+BH → 10
CN4805	Conn Leaf Spring Plug 1p WH : 0.8+-0.2	1294-8905	HA+BH → 11
CN4853	Conn Pogopin 1p	1244-6446	HA+BH → 12
CN4854	Conn Pogopin 1p	1244-6446	HA+BH → 12
CN4855	Conn Pogopin 1p	1244-6446	HA+BH → 13
CN4858	Conn Pogopin 1p	1244-6446	HA+BH → 13
CN5103	Conn WtB Receptacle 2p	1206-4855	HA+BH → 14
CN4860	FICTIVE Conn Leaf Spring Plug 1p	1289-4882	HA+BH → 15
CN4861	FICTIVE Conn Leaf Spring Plug 1p	1289-4882	HA+BH → 16
CN4862	FICTIVE Conn Leaf Spring Plug 1p	1289-4882	HA+BH → 16
MC3002	Mic 3.5 Silicon F51	1297-9686	HA+BH → 17
MC3001	Mic 4.0 Silicon F51	1302-9873	HA+BH → 18

## 2 Tool

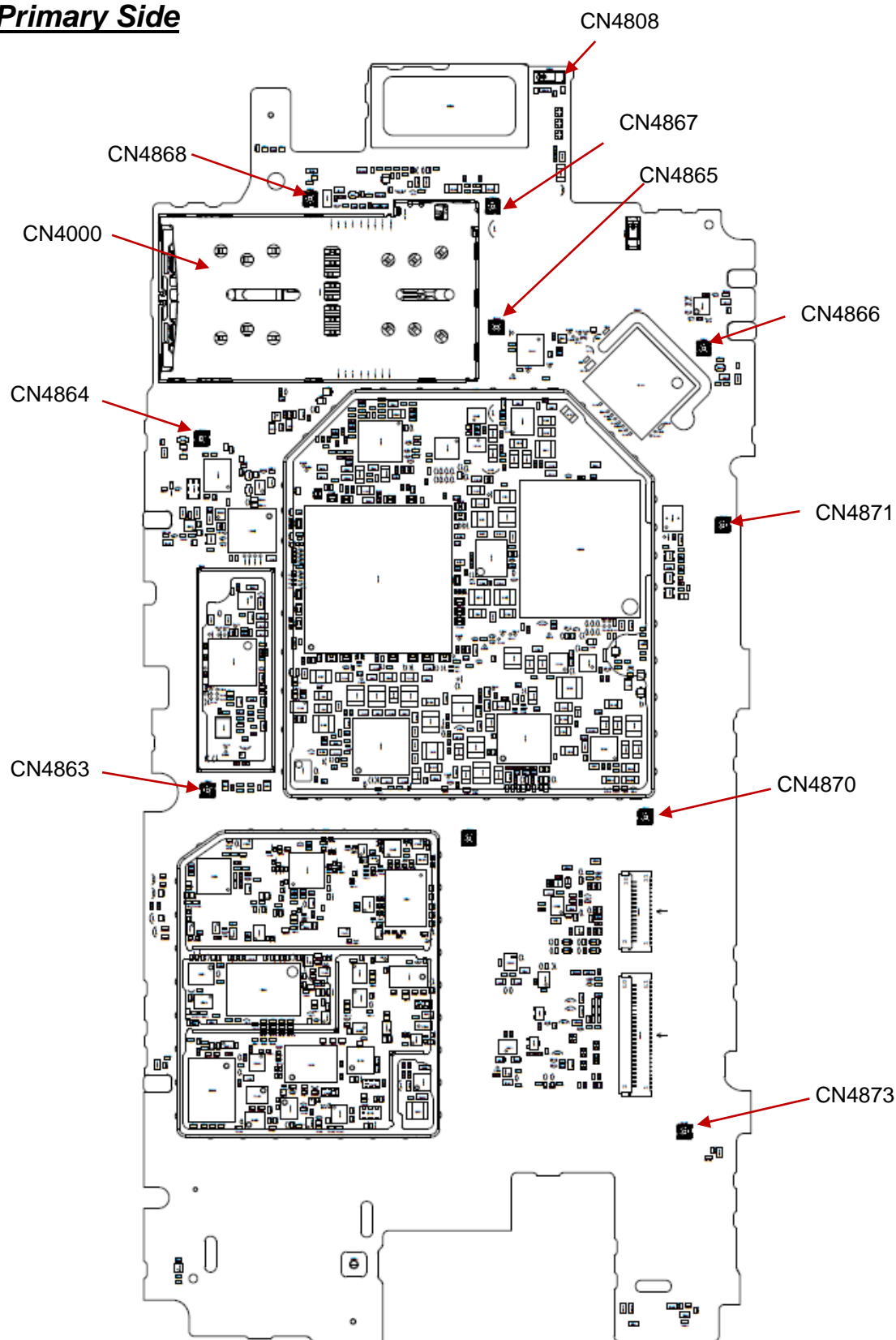
### SPECIAL TOOL

1. Soldering Fixture (1303-9962)



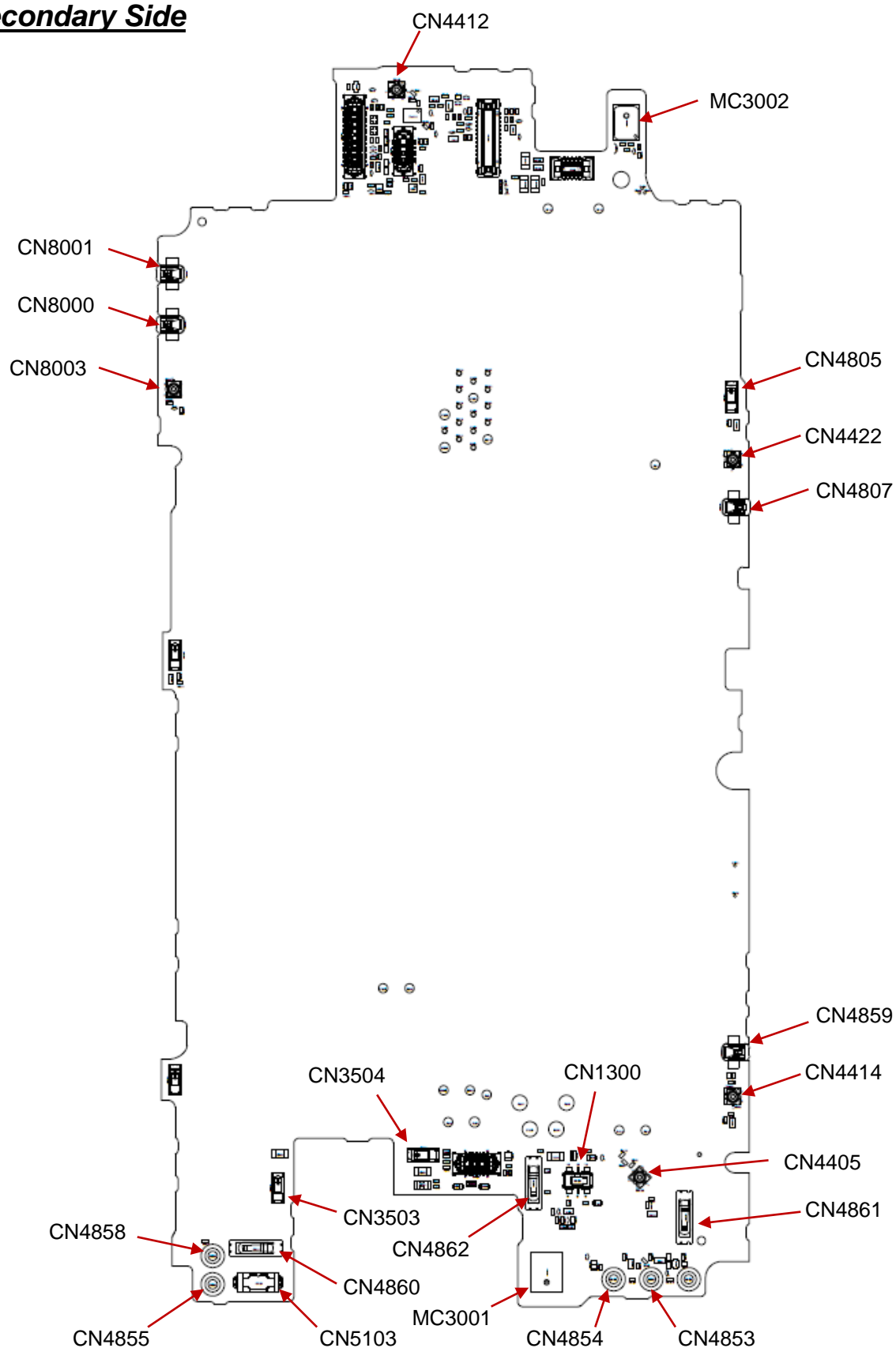
## 3 Component Placing

### Primary Side



## Component Placing

### Secondary Side

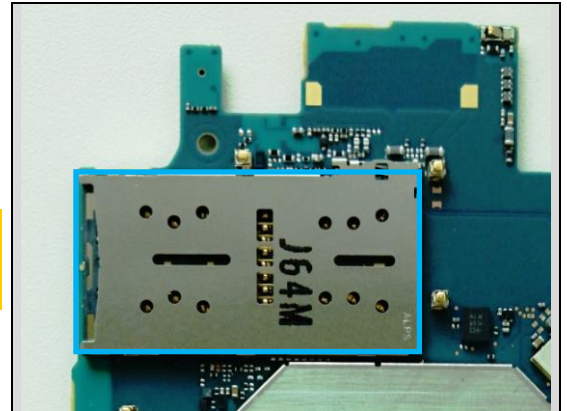


## 4 Additional Repair Info

### Primary Side 1

CN4000

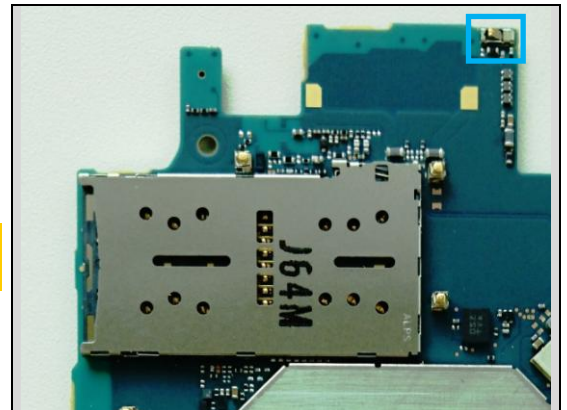
*Replace if mechanical damaged (No network, restart, No SIM card is detected, no SD card is detected, can't insert Cap Tray Assy)*



### Primary Side 2

CN4808

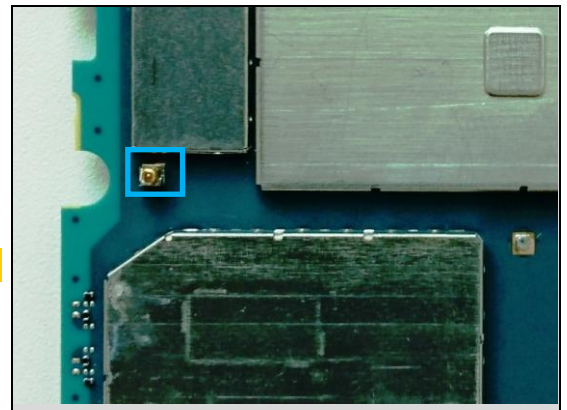
*Replace if mechanical damaged (No or bad network, antenna).*



### Primary Side 3

CN4863

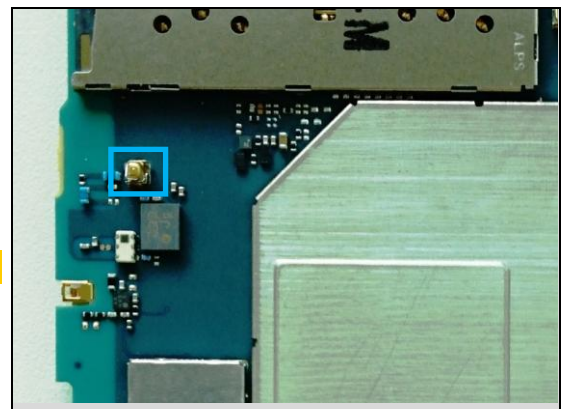
*Replace if mechanical damaged.*



### Primary Side 4

CN4864

*Replace if mechanical damaged.*



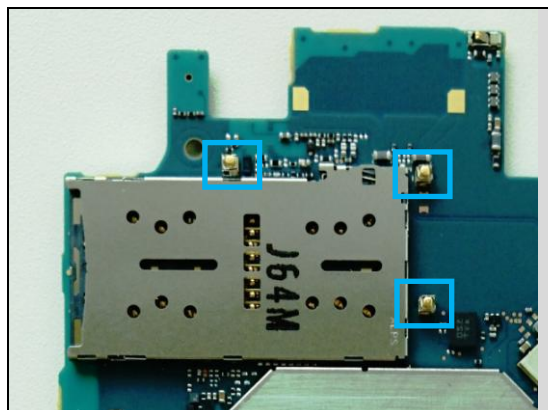


## Additional Repair Info

### Primary Side 5

CN4865, CN4867, CN4868

*Replace if mechanical damaged.*



### Primary Side 6

CN4866

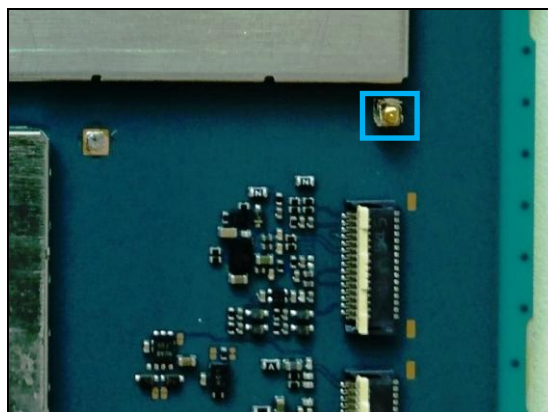
*Replace if mechanical damaged.*



### Primary Side 9

CN4870

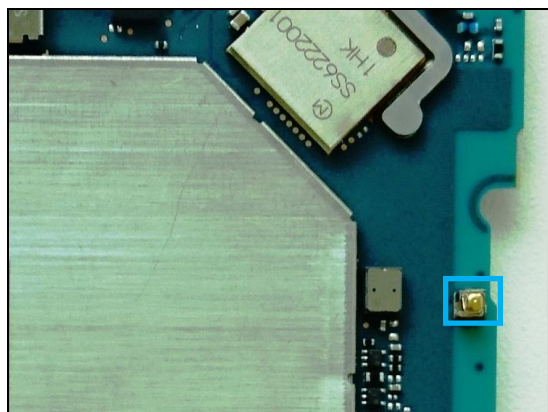
*Replace if mechanical damaged.*



### Primary Side 10

CN4871

*Replace if mechanical damaged.*

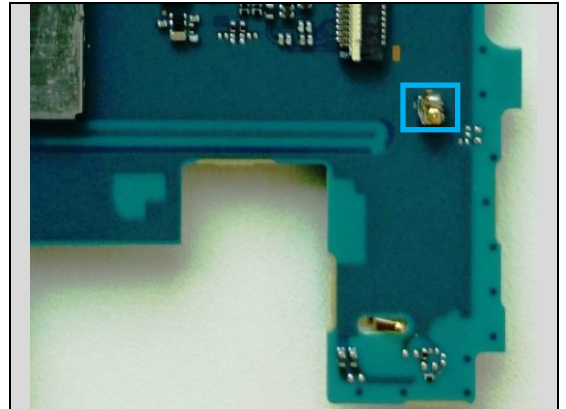


## Additional Repair Info

### Primary Side 11

CN4873

**Replace if mechanical damaged.**



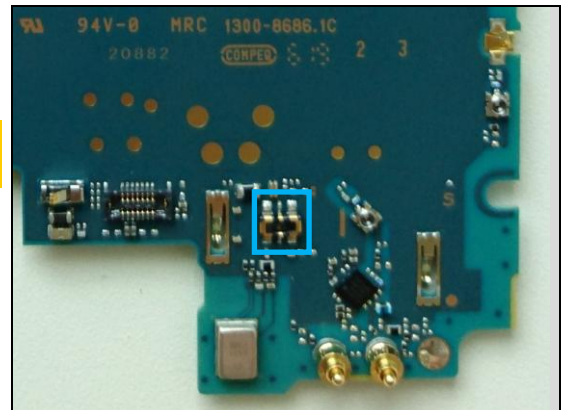
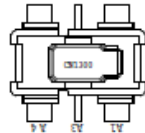
## Additional Repair Info

### Secondary Side 1

CN1300

**Replace if mechanical damaged (Phone daed or power off).**

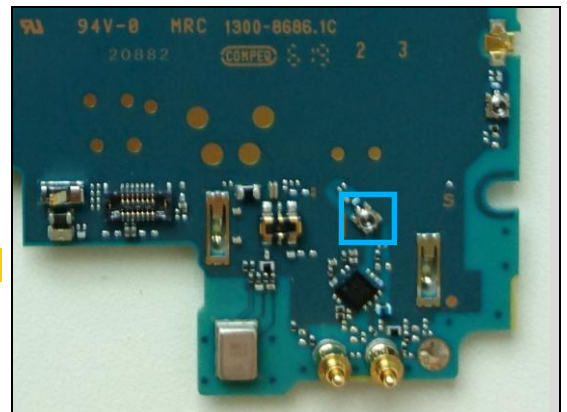
Component Direction



### Secondary Side 2

CN4405

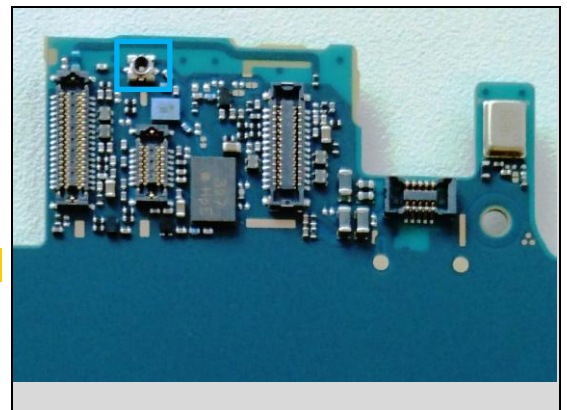
**Replace if mechanical damaged.**



### Secondary Side 3

CN4412

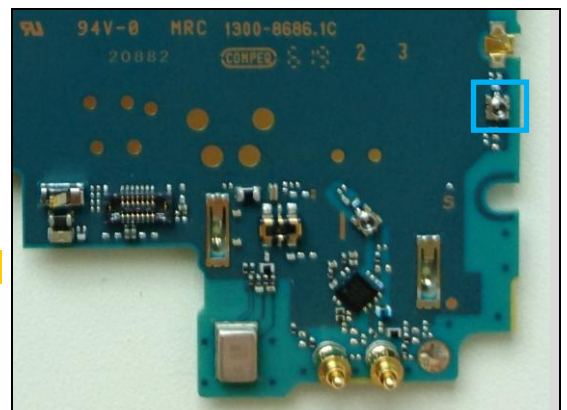
**Replace if mechanical damaged.**



### Secondary Side 4

CN4414

**Replace if mechanical damaged.**

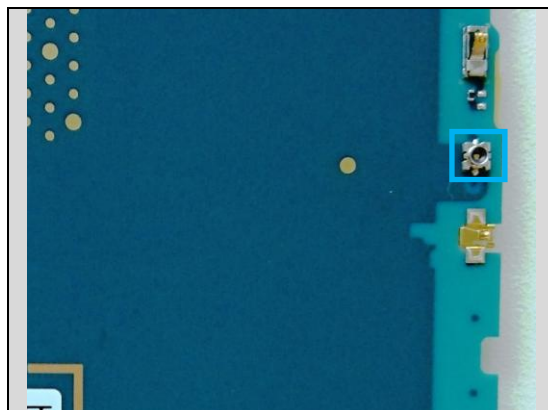


## Additional Repair Info

### Secondary Side 5

CN4422

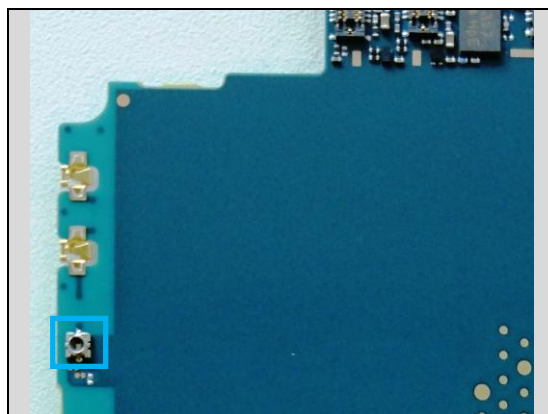
**Replace if mechanical damaged.**



### Secondary Side 6

CN8003

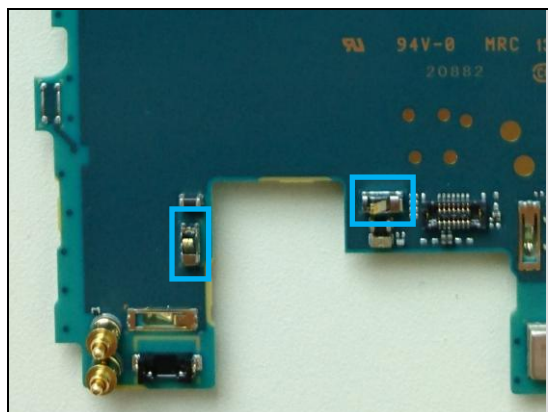
**Replace if mechanical damaged.**



### Secondary Side 7

CN3503, CN3504

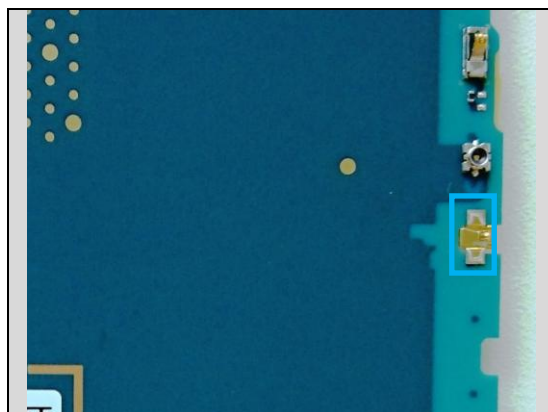
**Replace if mechanical damaged.**



### Secondary Side 8

CN4807

**Replace if mechanical damaged (No or bad network, antenna).**



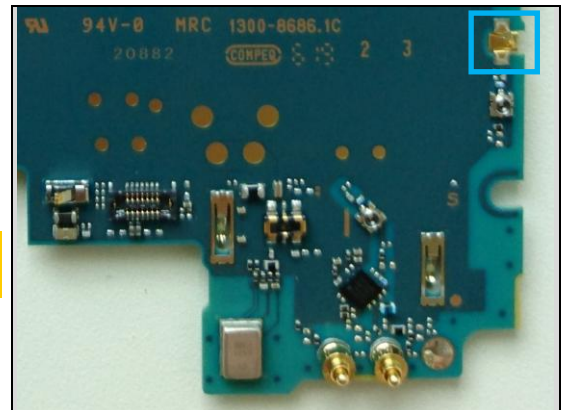


## Additional Repair Info

### Secondary Side 9

CN4859

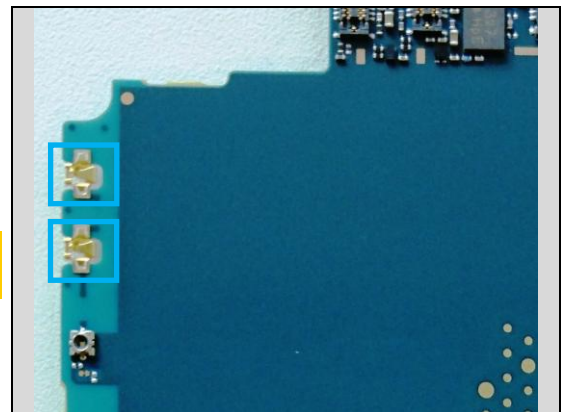
**Replace if mechanical damaged (No or bad network, antenna).**



### Secondary Side 10

CN8000, CN8001

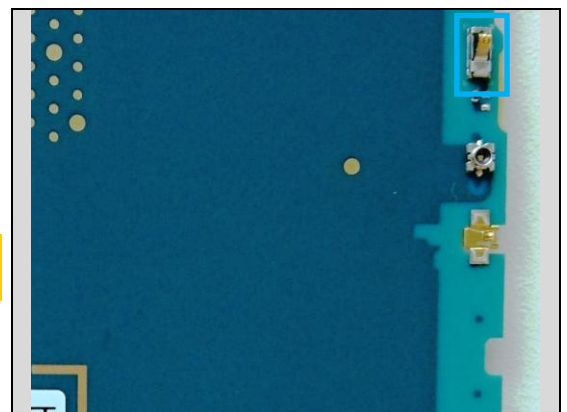
**Replace if mechanical damaged (No or bad network, antenna).**



### Secondary Side 11

CN4805

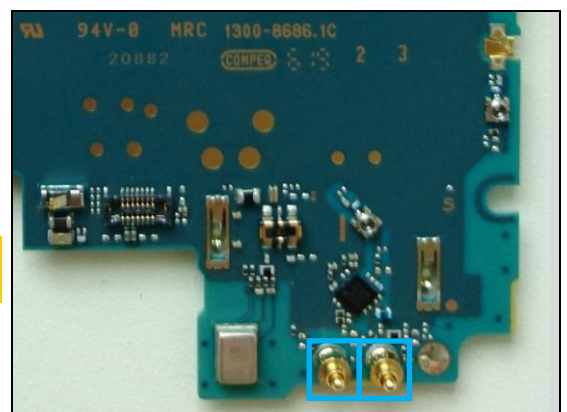
**Replace if mechanical damaged (No or bad network, antenna).**



### Secondary Side 12

CN4853, CN4854

**Replace if mechanical damaged (No or bad network, antenna).**

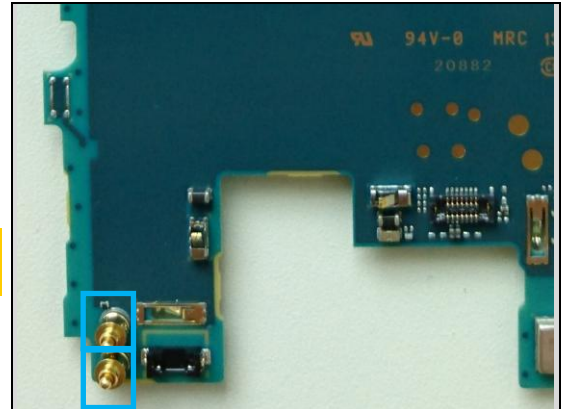


## Additional Repair Info

### Secondary Side 13

CN4855, CN4858

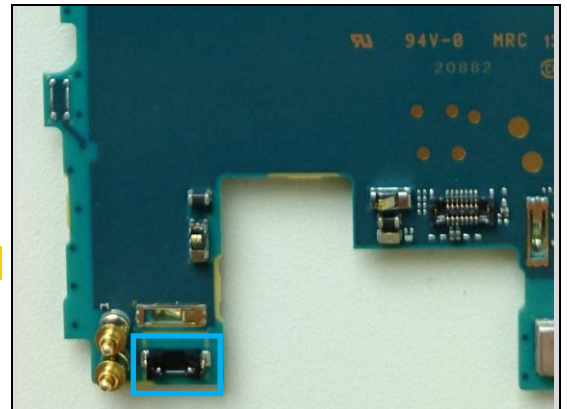
*Replace if mechanical damaged (No or bad network, antenna).*



### Secondary Side 14

CN5103

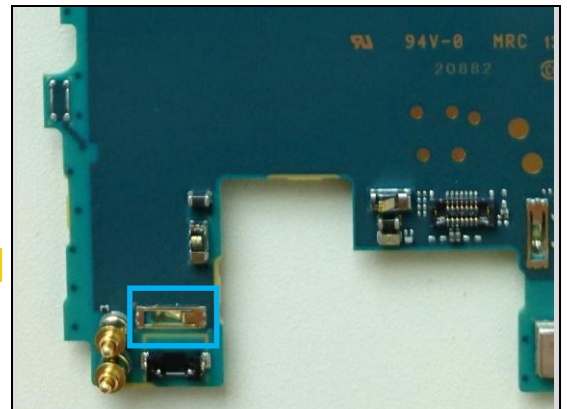
*Replace if mechanical damaged (Vibrator defect).*



### Secondary Side 15

CN4860

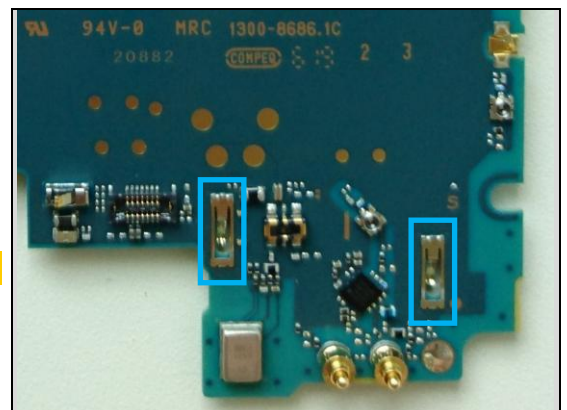
*Replace if mechanical damage.*



### Secondary Side 16

CN4861, CN4862

*Replace if mechanical damaged.*



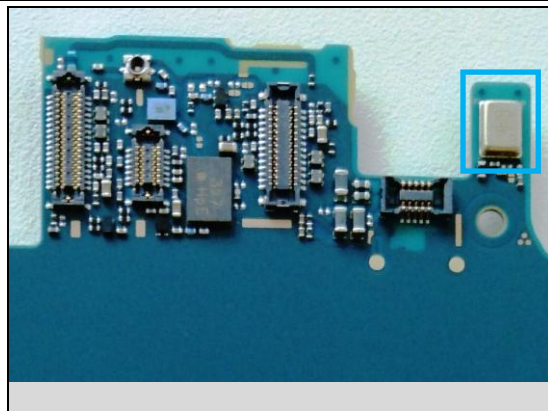
## Additional Repair Info

### Secondary Side 17

MC3002

**Replace if mechanical damaged (Mic defect).**

Component Direction

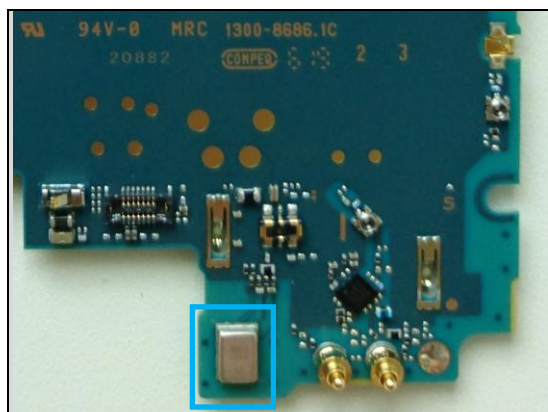


### Secondary Side 18

MC3001

**Replace if mechanical damaged (Mic defect).**

Component Direction



## 5 Revision History

Rev.	Date	Changes / Comments
1	2016-Sep-01	Initial release